



WOLVES



KEY INFORMATION

Wolves are members of the **dog** family. They are known for their intelligence and courage. Wolves are also noted for traveling very long distances. Native American's named their most powerful warriors after wolves. Wolves can be found in different habitats around the world, usually in the wilderness, in places like forests, grasslands, mountainous regions, deserts and the Arctic. Countries they're usually found in include; Arctic Russia and America, although they mainly live away from humans in Alaska and Canada. Wolves can live for up to 13 years in the wild and 16 years in captivity. It takes a pup two years to get to its full-grown adult size. They can reach speeds of up to 38 miles per hour when sprinting.

APPEARANCE

Adult wolves are usually 1.4 to 1.8 metres (4.6 to 5.9 ft) in length from nose to tail. As adults they may weigh typically between 23 to 50 kilograms (51 to 110 lb). The heaviest wolf recorded weighed 86 kilograms (190 lb). The wolf has a long muzzle, short ears, long legs, and a long bushy tail.

Wolves usually measure 66-96 cm at the shoulder. Wolves have fur made up of two layers. The top layer is resistant to dirt, and the under-layer is water resistant. The colour of their fur can be any combination of grey, white, taupe, brown, and black.

Wolf pups are born deaf and blind, only weighing about 0.5 kilograms! They will grow over the next two years to become their full adult size.

DIET

They are apex predators, which means they are at the top of the food chain. Their only threats usually come from humans. Wolves have 42 sharp teeth and strong bodies, which is covered by grey or black and/or white fur. They also have great senses, including brilliant eyesight, hearing and smell. Their sense of smell is about 100 times greater than the average human!

Wolves are fierce hunters and are seldom challenged, making them fantastic predators, known as apex-predators. This means they're at the top of their food chain.

Wolves are mainly meat-eaters, which means they are called carnivores. They tend to travel in packs, led by an alpha male. Packs can be anything from 2 to 30 in number, although the average pack size is more likely to be 5 - 8 wolves. An alpha male is often accompanied by their partner, an alpha-female mate. The alpha-couple always eat before any of their pack.

Hunting as a pack makes it easier for wolves to attack larger animals, like elk, deer, moose and bison, which they may not be able to attack by themselves. However, wolves will also supplement their diet with fruits like berries, apples and pears.



FUN FACTS

- Wolves have over 200 million scent cells.
- They can hear up to six miles away in the forest.
- A wolf's jaw has a crushing power of nearly 1500 pounds per square inch!
- A wolf can eat 20 pounds of meat in one meal.
- Wolves can swim up to 8 miles!
- A wolf howl can be heard up to 10 km away.

FIND OUT MORE...

<https://www.youtube.com/watch?v=v1-fv-OLY9A>

<https://www.youtube.com/watch?v=YXMo5w9aMNs>

<https://www.youtube.com/watch?v=yCn9H4A7ZVY>

EXAMPLE QUESTIONS:

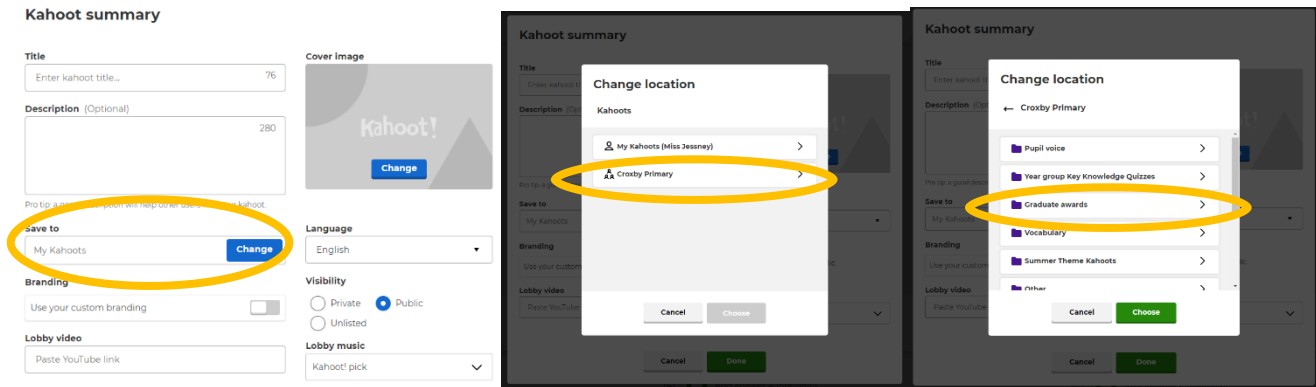
5 questions the children can use for their revision.

1. Which type habitats can wolves be found in? Name three of them.
2. How many teeth does an adult wolf have?
3. How long does it take for a wolf pup to become an adult?
4. How far away can a wolf howl be heard?
5. Why do Native Americans name their most powerful warriors after wolves?



Please create a Kahoot with 5 questions (2/3 of which may be the above example questions).

1. Login to Kahoot, click create button (top right).
2. Add a title: Croxby Primary Graduate Test – XXX
Save to Croxby Primary > Graduate Awards.
Select 'Use Current Branding'.



3. Add 5 quiz questions.
Consider your multiple-choice answers carefully. Make the 3 incorrect options likely rather than funny. Avoid 'All of the above' as an answer.

Please send completed Graduates to Lauren.