



Climate Action Plan 2025 - 2027

Croxby Primary School



Work Hard Be Kind Aim High



**THE CONSORTIUM
ACADEMY TRUST**





CLIMATE ACTION PLAN

Our Vision is Shaping Positive Futures

At Croxby Primary School our Mission is Enriching Lives and Broadening Horizons the Croxby Way. We believe that small actions can lead to big changes, and we're excited to take steps toward a greener, more sustainable future. Our Climate Action Plan is all about creating a positive impact on the environment while inspiring our students, staff, and families to work together for a cleaner, healthier world.

From reducing waste to saving energy, we will Work Hard and Aim High to make eco-friendly choices that will benefit not only our school but the community around us. By embracing these efforts, we hope to encourage everyone at Croxby Primary School to become climate champions and help build a brighter, more sustainable tomorrow.

SUMMARY

Not started:	15 items
In progress:	13 items
Completed:	5 items





Decarbonisation

Carry out a building energy audit

Conducting a building energy audit helps schools pinpoint areas of energy waste, from heating inefficiencies to unnecessary lighting. Schools can use professional energy assessors or pupil-led monitoring programs to analyse energy usage and recommend improvements. Findings can inform decisions on insulation, lighting upgrades, and behaviour-based energy-saving strategies.

Not started

Run a switch off campaign

A switch-off campaign raises awareness about energy consumption and encourages simple behavioural changes to reduce waste. Schools can run competitions, put up reminder posters, and conduct audits to track energy savings. Engaging pupils through classroom discussions and real-time energy monitoring can make energy efficiency a long-term habit.

Not started





Decarbonisation

Deliver some lessons outside

Outdoor lessons provide pupils with fresh air and a change of scenery while reducing reliance on indoor lighting and heating. Whether it's reading in a shaded area, conducting science experiments outside, or using school gardens for hands-on learning, outdoor education fosters engagement and sustainability awareness.

Started: 16th Sep 2025

In progress

Improve Insulation in School Buildings

Proper insulation helps maintain a stable indoor temperature, reducing the need for heating in winter and cooling in summer. By improving insulation in walls, roofs, and windows, schools can lower energy bills and create a more comfortable learning environment. Over time, these upgrades contribute to significant emissions reductions and cost savings.

Started: 16th Sep 2025

In progress





Decarbonisation

Install LED lighting

LED lighting is a cost-effective and energy-efficient alternative to traditional incandescent and fluorescent bulbs. By switching to LED lighting, schools can significantly reduce electricity consumption and maintenance costs while lowering their carbon footprint. LED bulbs also generate less heat, improving classroom comfort and reducing the need for air conditioning.

Started: 16th Sep 2025

In progress

Install motion sensors to lights

Motion sensors automatically turn lights on and off depending on occupancy. By installing these in classrooms, hallways, and restrooms, schools can significantly cut down on wasted electricity. This ensures that lights are only used when needed, reducing overall energy consumption.

Started: 16th Sep 2025

In progress





Decarbonisation

Replace windows with energy-efficient glazing

Replacing old, single-glazed windows with energy-efficient double or triple glazing improves insulation, reducing the need for heating in winter and cooling in summer. This upgrade enhances classroom comfort, lowers energy bills, and supports sustainability goals. Schools with outdated windows can apply for grants or funding to offset costs.

Started: 16th Sep 2025

In progress

Travel survey

A travel survey helps schools gather data on pupil and staff commuting habits. By understanding travel patterns, schools can identify opportunities to encourage more sustainable travel options such as walking, cycling, carpooling, or using public transport. This information can support decisions on bike rack installations, road safety improvements, and incentive programs for eco-friendly commuting.

Started: 16th Sep 2025

Completed 1st Feb 2026

Completed





Decarbonisation

Upgrade electrical appliances to energy-efficient alternatives

Schools can significantly reduce electricity consumption by upgrading to energy-efficient appliances, including LED lighting, low-energy projectors, and efficient kitchen equipment. Energy Star-rated devices and appliances use less power, lowering operational costs and environmental impact. Schools should prioritise replacing older, inefficient devices first to maximise savings.

Started: 16th Sep 2025

In progress





Adaptation & Resilience

Create a Heatwave Health and Safety Assessment

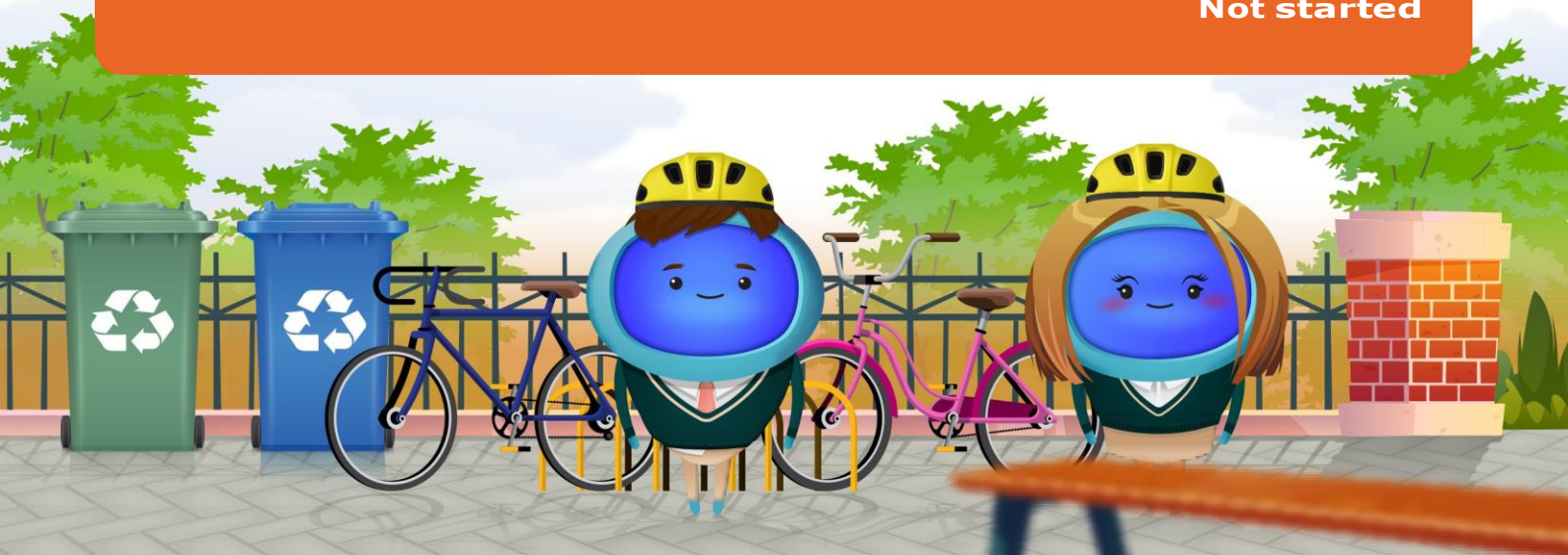
As heatwaves become more common due to climate change, schools must ensure the wellbeing of pupils and staff during extreme temperatures. A heatwave health and safety assessment should include installing shaded seating areas, increasing hydration points, improving ventilation, and adjusting schedules during hot weather. Proactive planning helps prevent heat-related illnesses while fostering a healthier, more resilient learning environment.

Not started

Install water butts

Water butts allow schools to collect and store rainwater, reducing dependence on mains water for irrigation, cleaning, and other non-drinking purposes. This initiative helps conserve water, cut utility costs, and educate pupils on sustainable water management practices. Schools implementing water butts can use them to water gardens, supply outdoor play areas, and even contribute to science lessons on water conservation.

Not started





Adaptation & Resilience

Plan a School-wide Energy Reduction Challenge

Engaging pupils and staff in an energy-saving challenge builds awareness and encourages sustainable habits. Schools can track electricity consumption and reward classrooms that achieve the highest reductions.

Not started

Set Up a School Resilience Committee

Establishing a resilience committee ensures ongoing adaptation to environmental challenges. This team, composed of pupils, staff, and community members, can assess risks, implement sustainability policies, and coordinate resilience projects. Regular meetings will help track progress and adjust strategies as needed.

Not started





Adaptation & Resilience

Audit and Reduce Single-Use Plastics

Schools can conduct an audit of their plastic use, identifying areas where single-use plastics can be eliminated or replaced with sustainable alternatives. This includes plastic cutlery, straws, and packaging materials. Encouraging the use of reusable water bottles and lunch containers can also contribute to waste reduction.

Started: 16th Sep 2025

In progress

Source Cleaning Products with Eco-Certifications.

Traditional cleaning products contain harmful chemicals that can pollute water and air. Schools can transition to eco-friendly alternatives certified by environmental agencies, reducing exposure to toxins and supporting sustainability efforts.

Started: 16th Sep 2025

In progress



Adaptation & Resilience

Work with Suppliers to Reduce Packaging Waste

Collaborate with vendors to minimise packaging materials. Long Description: Schools can request that suppliers reduce unnecessary packaging in product deliveries. This can include bulk purchasing to limit plastic wrapping and encouraging the use of recyclable or compostable materials.

Started: 16th Sep 2025

In progress





Biodiversity

Carry out a nature survey

Schools can conduct nature surveys to document the species of plants, insects, and animals found on school grounds. This information can help identify areas for biodiversity improvement, such as adding nesting boxes, planting native species, or reducing pesticide use. Engaging pupils in biodiversity monitoring promotes conservation awareness and scientific curiosity.

Not started

Create a School Pollinator Garden

A school pollinator garden provides a habitat for bees, butterflies, and other beneficial insects. By planting native wildflowers and nectar-rich plants, schools can contribute to biodiversity and support local ecosystems. These gardens also serve as valuable outdoor learning spaces where pupils can observe pollination in action and learn about the role of insects in food production.

Not started





Biodiversity

Participate in the RSPB Birdwatch

Schools can engage pupils in the Royal Society for the Protection of Birds (RSPB) Birdwatch, an annual citizen science event where participants record and report bird sightings. This initiative helps develop observation skills, raises awareness of biodiversity, and contributes valuable data for conservation efforts. Schools can integrate this activity into science and geography lessons to reinforce learning.

Not started

Start a gardening club

A gardening club provides pupils with hands-on experience in growing flowers, vegetables, and trees, while also teaching them about sustainability, soil health, and biodiversity. Gardening improves mental well-being, fosters teamwork, and enhances outdoor learning opportunities. Schools can use gardens to produce food, beautify the environment, and engage pupils in long-term eco-friendly initiatives.

Not started





Biodiversity

Work with the pupils to get their views on how the school site should look

Schools can involve pupils in decision-making about their learning environment, ensuring that sustainability considerations are incorporated. Whether through workshops, surveys, or school councils, pupil input can lead to more effective green space planning, improved outdoor learning areas, and projects that align with their needs and interests. Involving pupils also increases their sense of ownership and responsibility for the school environment.

Started: 16th Sep 2025
Completed 12th Feb 2026

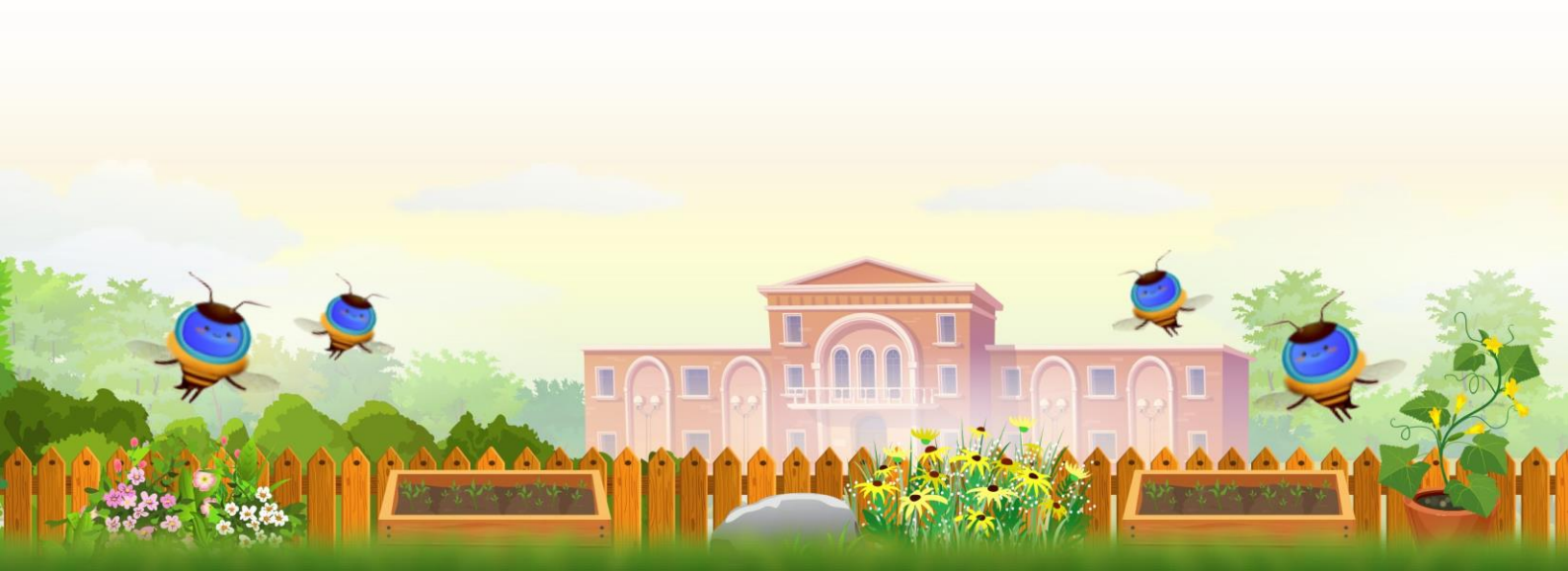
Completed

Build an Insect Hotel

Log piles and disused wood pallets can be used to create a natural habitat for insects, amphibians, and fungi, enhancing biodiversity and promoting decomposition processes. They can be strategically placed in school gardens to serve as learning tools for ecology studies.

Started: 16th Sep 2025

In progress





Biodiversity

Plant a Hedge to Create a Natural Windbreak

Hedgerows provide shelter for wildlife, improve air quality, and act as a natural windbreak to protect school buildings and playgrounds. They enhance green spaces while reducing noise pollution and improving local air quality.

Started: 16th Sep 2025

Completed: 16th Sep 2025

Completed

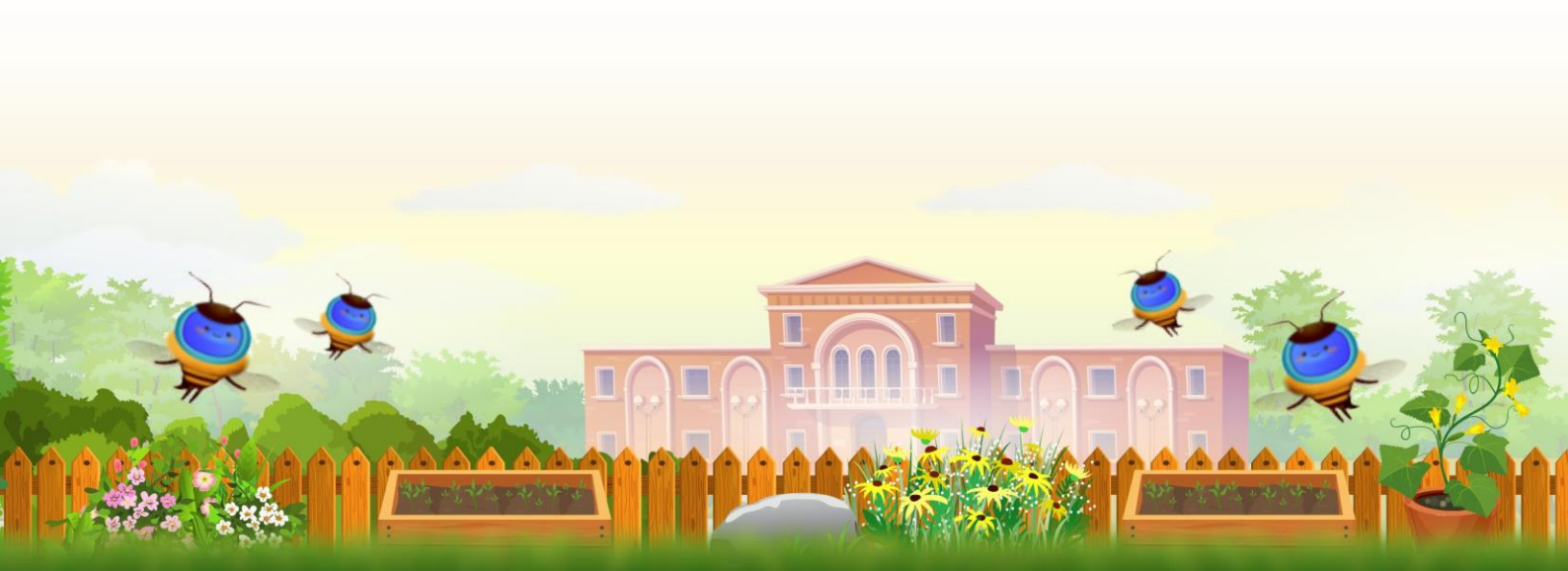
Sign your school up to education nature park

Schools can participate in local or national education nature park programs to connect pupils with nature-based learning experiences. These programs provide hands-on engagement with biodiversity, conservation, and sustainability. By participating, pupils gain a deeper appreciation of the environment, and schools can access valuable teaching resources and support for outdoor learning initiatives.

Started: 16th Sep 2025

Completed: 16th Sep 2025

Completed





Climate Education & Green Skills

Host a Sustainability-Themed Assembly Each Term

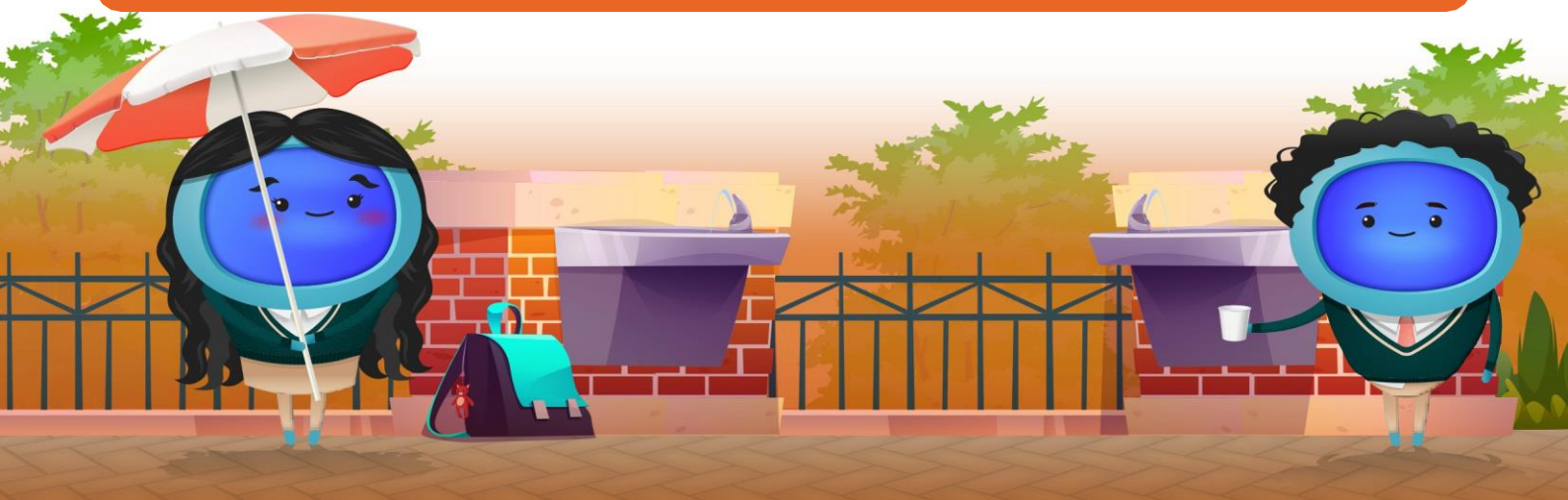
Hosting a sustainability-themed assembly each term ensures that pupils remain engaged with environmental topics. These events can feature guest speakers, pupil-led presentations, and school-wide challenges to encourage participation. Assemblies help build a culture of sustainability and reinforce its importance throughout the school community.

Not started

Launch a Carbon Footprint Awareness Campaign

Schools can run campaigns to educate pupils and staff about their carbon footprints and practical ways to reduce them. Through posters, workshops, and hands-on activities, pupils can learn how their transportation choices, food consumption, and energy use contribute to emissions. This knowledge can lead to long-term changes in behaviour that support sustainability goals.

Not started





Climate Education & Green Skills

Launch a Sustainable Commute Challenge

Schools can organise competitions and incentives to promote walking, cycling, or public transport use instead of cars. This helps cut emissions, reduce traffic congestion, and encourage healthier lifestyles.

Not started

Organise a pupil-led Energy and Waste Audit

A school-wide audit allows pupils to evaluate energy use and waste production, identifying areas for improvement. This hands-on approach helps pupils understand real-world sustainability challenges and implement practical solutions such as reducing electricity use, recycling more effectively, and cutting down on single-use plastics.

Not started





Climate Education & Green Skills

Organise a walk to school week

Encouraging pupils and staff to walk, bike, or use public transport instead of driving can reduce emissions and improve local air quality. A Walk to School Week helps raise awareness about the environmental and health benefits of active travel.

Not started

Create a School Eco Committee

A school eco committee gives pupils the opportunity to lead sustainability projects, influence school policies, and advocate for environmental improvements. This initiative fosters leadership, encourages responsibility, and ensures sustainability remains a core focus in school decision-making.

Started: 16th Sep 2025

Completed: Oct 2025

Completed





Climate Education & Green Skills

Create a School Sustainability Pledge Program

Schools can implement a pledge program where pupils and staff commit to eco-friendly actions such as reducing waste, conserving energy, and using sustainable transport. Regular updates and rewards keep engagement high.

Started: 16th Sep 2025

In progress

Develop an Outdoor Learning Program Focused on Nature

Outdoor learning programs provide pupils with hands-on experiences in nature, teaching them about local ecosystems, biodiversity, and conservation. Schools can create learning gardens, conduct nature walks, or collaborate with conservation groups to enhance pupil engagement with the environment.

Started: 16th Sep 2025

In progress





Climate Education & Green Skills

Implement a Sustainable School Uniform Policy

Schools can work with suppliers to source uniforms made from organic, recycled, or ethically produced materials. Encouraging second-hand uniform sales and repair workshops can further reduce waste and environmental impact.

Started: 16th Sep 2025

In progress

