



Key People/Scientists



Jane Colden
(1724 - 1776)

Jane Colden was a botanist. She is thought to be America's first female botanist. Jane collected, classified and described plants near her home of Montgomery, Orange County, New York. She completed more than 300 drawings of the plants. Jane also described their medicinal use and administration by the local residents.

Key Questions

What do plants need to grow?	Plants need light, water, suitable temperature, air and nutrients from the soil to grow.
How do seeds travel?	Seeds are dispersed in lots of different ways. They can travel by the wind, by animals, by water, by bursting or by humans.
What do seeds and bulbs need to germinate?	All seeds need water, oxygen and a suitable temperature to germinate. Most do not need light and can germinate in the dark. Seeds and bulbs have a store of food inside them.
What is the life cycle of a plant?	Plants follow a cyclic process of starting a new life, growing and then reproducing and continuing the cycle.

Misconceptions/Key Facts

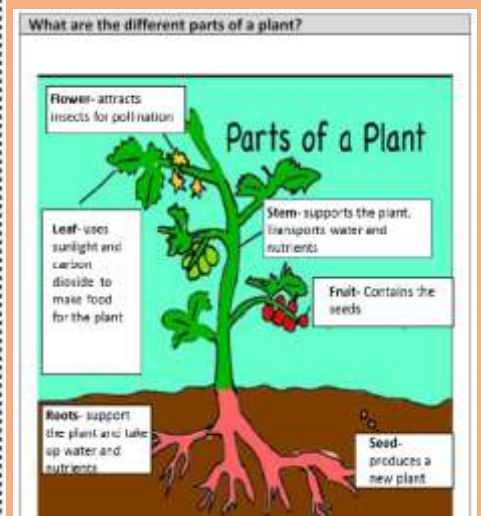
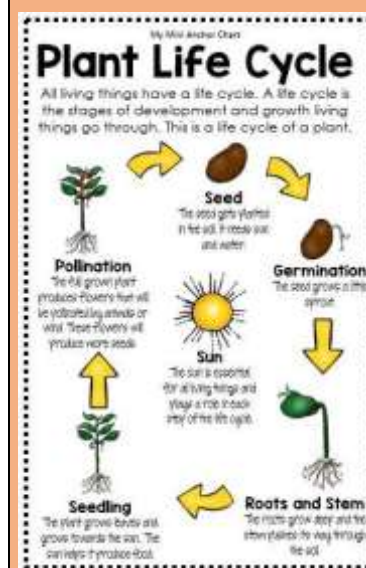
Misconception: Roots take food in for the plant.

Fact: Roots absorb minerals and water for the plants to help keep it healthy. Minerals and water are not food for plants. The plant makes its own food using energy from the sun.

Misconception: Leaves take in water for the plant.

Fact: Roots take in water. The main function of leaves is to carry out photosynthesis (absorb energy from the sun to make its own food).

Diagrams/Visual Aids



Key Vocabulary

botany	The study of plants.
germination	The process by which a seed starts to grow.
grow	To increase in size or number.
healthy	Healthy plants have firm leaves, well-formed flowers and fruit and well-developed root systems.
light	The energy from the sun, a lamp etc. that makes it possible to see things.
reproduction	The production of new offspring in plants.
temperature	The measurement in degrees of how hot or cold something or somewhere is.
water	A liquid without colour, smell or taste used for drinking, washing etc.