



PAUL NASH



EARLY LIFE AND INSPIRATION

Born in London 1889, Paul had a love of landscapes from a young age. He attended the Slade School of Art and focused himself on improving his landscape painting. He was particularly inspired by historic monuments, historic sites and the spiritual elements of the natural environment. He also took photographs to inspire his work or as art pieces themselves.

CAREER

In 1914 he enlisted in the Artists' Rifles to serve in World War I. Appointed an official war artist by the British government in 1917, he created scenes of war such as *The Menin Road* (1919), a shattered landscape painted in a semiabstract, Cubist-influenced style.

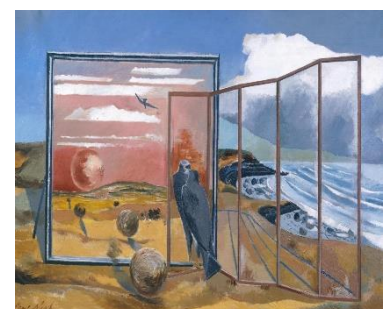
In the late 1920s he became interested in Italian artist Giorgio de Chirico's mysterious landscapes, and he subsequently experimented with surrealist techniques. He is now considered an important part of the development of modernism in art. He founded Unit One, a group of British artists promoting new and experimental ideas in art.

In 1940, he served as a war artist again. His compositions became increasingly dreamlike and illogical, as expected of the surrealist movement, using elements to symbolise something else. He mainly used watercolour as his medium for the soft blends and transparency of colour. He could create a soft watercolour wash background by adding a greater volume of water and then use a drier brush with more pigment for adding detail.



SURREALISM

Surrealism was a literary and art movement that developed after WWI and its goal was to liberate thought, language, and human experience from the oppressive boundaries of rationalism. Art pieces often resembled a dream-like scene due to the often-unnatural combinations and composition of objects. Poet André Breton suggested that the unconscious mind was the source of creativity and could be unlocked through the arts. Many Surrealists recognised that the representation of a thing's actual appearance in the physical world might more effectively conjure associations for the viewer.





FIND OUT MORE...

<https://www.tate.org.uk/kids/explore/who-is/who-paul-nash>

EXAMPLE QUESTIONS

1. What year was Nash born?
2. What was one of the things Nash was inspired by?
3. What year did he enlist in the Artists' Rifles?
4. What kind of medium did he use to create his work?
5. What does surrealism art often resemble?