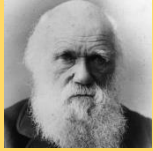


### Key People/Scientists



**Charles Darwin** - In 1831, he travelled around the world on a ship called the HMS Beagle to discover new plants and animals that had never been seen before.



**Carl Linnaeus** - He was born in Sweden on 1707 and is famous for helping to give many plants their names.



**Beatrix Potter** - She was born in 1866 and as well as writing stories for children such as Peter Rabbit, she studied and painted plants, especially fungi (mushrooms).

### Misconceptions

Misconception : Trees are not plants

Fact: Trees are plants

Misconception: Leaves take in water; the main function of leaves is to capture rain, water or dew.

Fact: Roots take in water.

### Key Questions

What is a plant?	A plant is a type of living thing that is not an animal but grows and reproduces. It makes its own food from sunlight.
What are the main different types of plants?	Flowering plants, Fruit, Vegetables, Trees, Shrubs.
What are the main parts of a plant?	Root, Leaf, Stem, Flower, Fruit, Trunk, Branch, Twig
What do plants need to grow?	Plants need soil, water and sun to grow.

### Diagrams/Visual Aids

#### Common Garden Plants



vegetable patch



rose



poppy



sunflower

#### Common Wild Plants



dandelion



daisy



buttercup



nettle



clover

#### Deciduous and Evergreen Trees

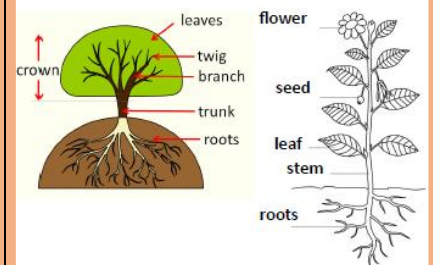


deciduous



evergreen

#### Parts of Trees and Plants



### Vocabulary

wild plants	Plants that grow by themselves without being cared for. If they are not wanted they are called weeds
garden plants	Plants that are planted in gardens to look attractive (flowering plants, trees, shrubs) or for food (fruit and vegetables).
evergreen	A tree that loses its leaves in the autumn every year.
deciduous	A tree or bush, which has green, leaves all year round.
fruit	Something which grows on a plant that has seeds or a stone. You can usually eat it.
vegetables	Plants that are grown for food such as potatoes, carrots and peas.
Root	The part of a plant that grows underground.
Flower	The colourful part of a plant that has smaller parts called petals.
Stem	The thin straight part of a plant that holds the flower and leaves.
leaf/leaves	The green parts of a plant that grow on the stem or branches.