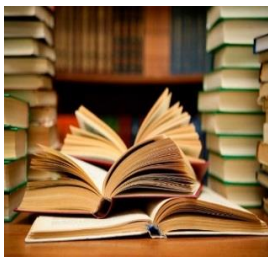


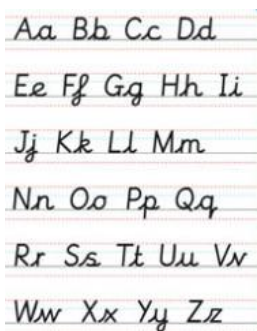


Spellings and phonics	
Phoneme	A single unit of sound
Digraph	A type of grapheme where two letters represent one phoneme (sound) eg <u>tree</u> / <u>turn</u>
Grapheme	A letter, or combination of letters, that corresponds to a single phoneme within a word eg <u>ten</u>
Vowels	The letters <i>a, e, i, o, u</i>
Consonants	The letters <i>b, c, d, f, g, h, j, k, l, m, n, p, q, r, s, t, v, w, x, y, z</i>
CVC	A word made of consonant vowel consonant eg <u>cat</u> / <u>dad</u>
Common exception words	A word which can't be phonetically decoded



Reading	
Segment	Break a word into phonemes
Blend	Put the phonemes back together
Decoding	Breaking down a word into different phonemes to help read it
Retrieval	Finding information from a text

Grammar and punctuation	
Sentence	Combining words to make sentences
Capital letter	Used at the start of sentences, for names and the personal pronoun <i>I</i>
Full stop	Used to mark the end of a sentence
Word	A single element of speech or writing, used to form a sentence
Finger spaces	Separation of words with spaces



Writing Key Concept/ Terminology	
Adjective	Used before a noun to make the noun's meaning more specific eg tall, blue
Noun	Words to name people, places or 'things' eg table, hotel
Rhyme	Words which have the same end sound eg hat/cat
Cursive	The formation of letters (starting from the line) to allow joined handwriting
Pre cursive	'Printing' the letter without starting from the line to allow joining

